

SERIES 229

DIAL INDICATOR



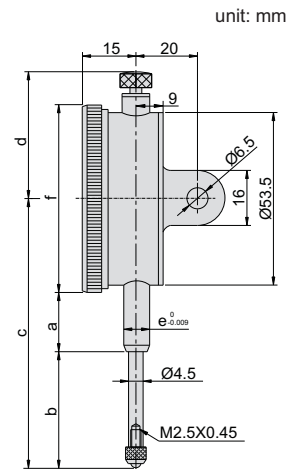
ACEUD



- ◆ Graduation: 0.01mm
- ◆ With limit hands
- ◆ Rang per revolution: 1mm
- ◆ Supplied with lug and flat back



229-030-11



Styli (optional)



Application



| Code | Range | Accuracy | Hysteresis | Scale | a | b | c | d | e | f |
|------------|-------|----------|------------|-------|------|------|------|--------|------|-------|
| 229-020-11 | 20mm | 25µm | 5µm | 0-100 | 20mm | 35mm | 83mm | 37.5mm | Ø8mm | Ø58mm |
| 229-030-11 | 30mm | 35µm | 7µm | 0-100 | 20mm | 40mm | 88mm | 37.5mm | Ø8mm | Ø58mm |